



# **Banks School District**

Design Committee Meeting 7

December 16th, 2025

# Agenda (3:15pm – 4:45pm)

|  |                      |
|--|----------------------|
| 1. Schedule                                      | 2 min Minutes        |
| 2. North Stars review                            | 3 min Minutes        |
| 3. Restroom table discussion - Update            | 3 min Minutes        |
| 4. Site Plan Development– Post VE                | 7 min Minutes        |
| 5. Floor Plan Development                        | 5 min Minutes        |
| 6. Exterior Development – Post VE                | 5 Minutes            |
| 7. Interior Finishes – Post VE                   | 20 min Minutes       |
| 8. Interior Development – Existing Hall Wishlist | 5 min Minutes        |
| 9. SHIPO Items MoA                               | 5 min Minutes        |
| 10. Salvage Items and Design cost tracking       | <u>5 min Minutes</u> |
|  | 6omin/9omin          |

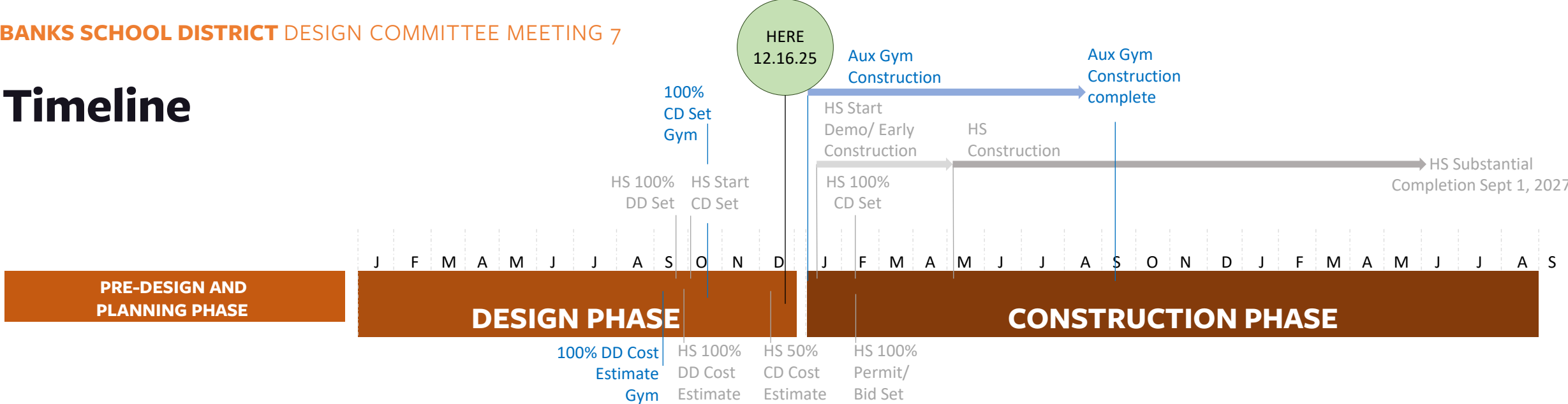




# Schedule/ Timeline



# Timeline



August 2024 – December 2024 *completed*      January 2025 – January 2026

January 2026 – August 2027

|  |   |   |      |       |
|--|---|---|------|-------|
| Science Prep Room  |   | 1 | 300  | 300   |
| Chemical Storage   |   | 1 | 100  | 100   |
| General Science Storage  |   | 1 | 150  | 150   |
| Marketing / Graphic Design Classroom   | 1 | 1 | 1200 | 1,200 |
| Extended Learning Areas  |   | 2 | 500  | 1,000 |
| Specialized Programs   |   |   |      |       |
| Life Skills Classroom (not counted as teaching station; only serves 3-4 students on average) |   | 1 | 1200 | 1,200 |
| ADA Accessible Restroom with Changing Table  |   | 1 | 100  | 100   |
| 2D and 3D Art  |   |   |      |       |
| 2D/3D Art Classroom (Existing room would be part of demolition)                              | 1 | 1 | 1900 | 1,900 |
| Kiln Room  |   | 1 | 150  | 150   |
| Art Supply / Storage Room  |   | 1 | 200  | 200   |
| Project Storage  |   | 1 | 200  | 200   |
| Library Media Center   |   |   |      |       |
| Library Media Center (Existing space would be part of demolition)                            |   | 1 | 2250 | 2,250 |
| Office / Workroom  |   | 1 | 200  | 200   |
| Textbook Storage   |   | 1 | 200  | 200   |
| Enclosed individual study rooms  |   | 2 | 50   | 100   |
| Enclosed collaboration rooms   |   | 1 | 150  | 150   |
| School Administration  |   |   |      |       |
| Entry / Reception / Lobby / Waiting Area   |   | 1 | 500  | 500   |





**North Stars**

## North Star Number 1

# Safe and healthy school that supports student learning and growth.

- A safe environment for learning
- A place where students are valued and celebrated
- Hallways that are filled with natural light, easy to navigate and supervise
- Inviting, calm, and clean
- Wayfinding that gives clear entry points and a sense of community

## North Star Number 2

# A future-facing school that empowers our students

- Supports modern learning options and future learning opportunities
- A foundation for student choices beyond high school
- Design that promotes flexibility
- Learning Spaces that reflect modern industries
- Adaptable technology

## North Star Number 3

# Part of our Banks community.

- Recognizes our past and looks to our future
- Design that reflects community needs
- Streamlined pickup and drop-off
- One community, one campus – continuity between ES, MS, and HS



## North Star Number 4

# Wise Use of Community Resources

- Building systems that promote health and wellness
- A building that stands the test of time – maintenance and longevity are priorities
- Thoughtful planning for the future
- Reflective of Banks community pride

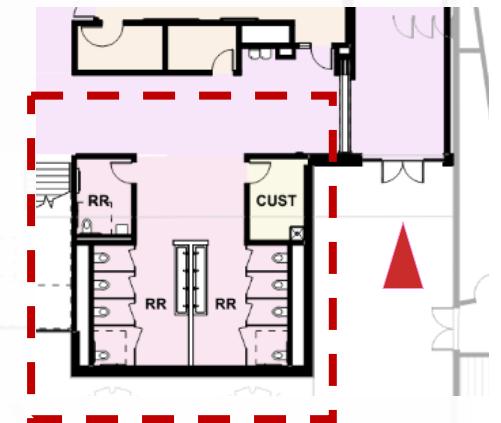
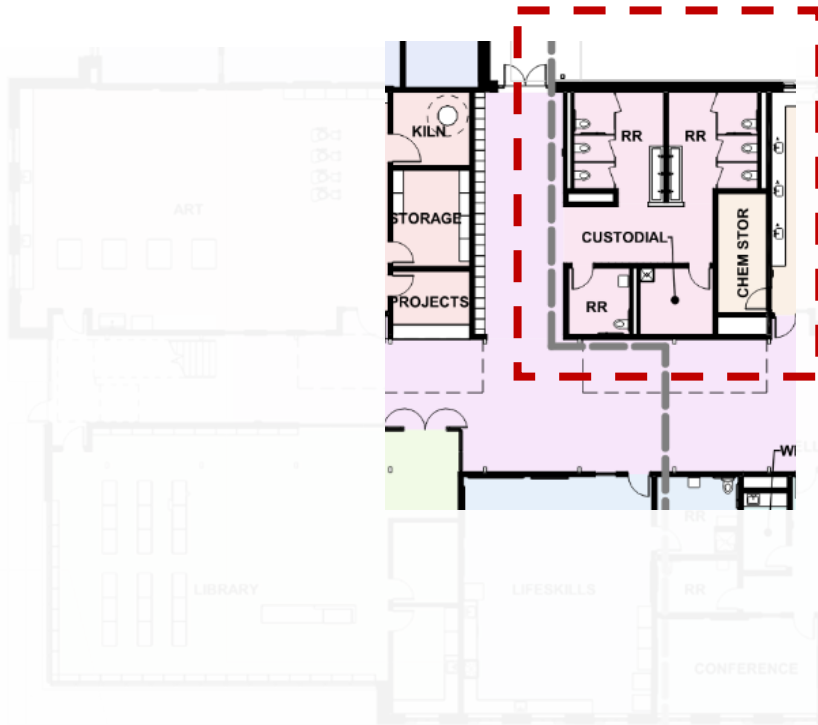


# Restroom table discussion: follow-up

## Restroom table discussion

### Items to Consider for Restrooms (Gender-Neutral or Gender-Specific)

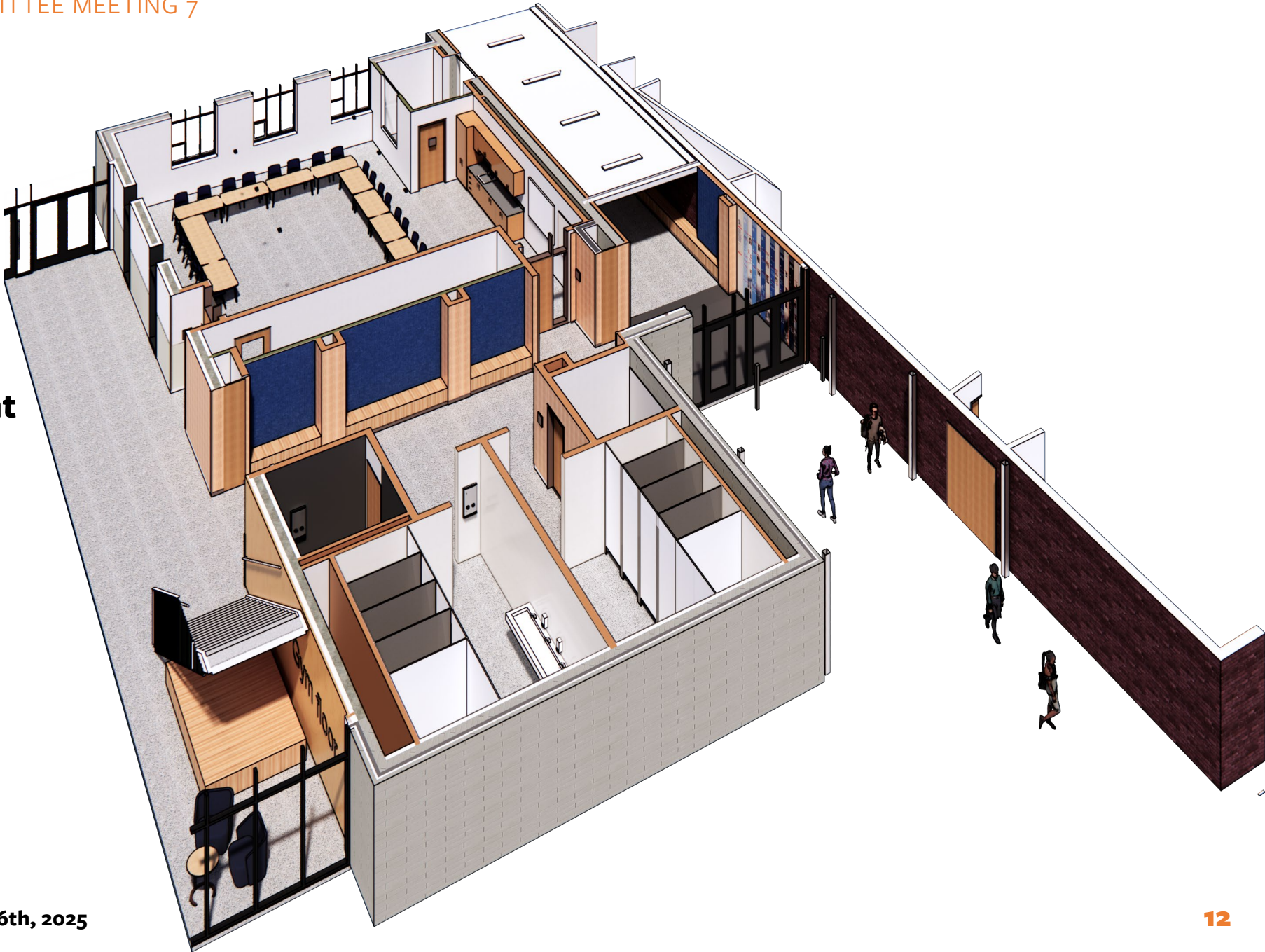
- **Openness to Hallway Visibility**
  - How accessible and visible should the restroom be from the hallway?
- **Comfort**
  - Ensuring a welcoming environment that feels safe and comfortable for all users
- **Privacy and Safety**
  - Supervision
- **Acoustic Considerations**
  - Soundproofing and noise reduction to enhance privacy and reduce discomfort
- **Inclusivity**
  - Spaces that meet diverse needs and promote a welcoming environment for everyone, including non-binary and transgender students.
- **Usage During School Hours**
- **Community Use / After-Hours Events (Non-Students)**
  - Accommodating community events and after-hours use.
  - Ensuring the spaces are accessible, safe, and meet community needs
- **Place of gathering**
  - Potential informal gathering spots.
  - Design features that support social interaction without compromising privacy



**Pros and Cons of Gender-Neutral  
vs. Gender-Specific Restrooms**

# Toilet room

- Toilet partition
- Full Height to ceiling
- Door undercut 8"
- Cleaning
- Privacy – line of sight





# Interiors Review - Toilet room

Toilet partition

Full Height to ceiling

Door undercut 8", 12", 14"

Cleaning

Privacy – line of sight







# Site Plan: Update

- 
- 37
- NW MAIN STREET
- NW WILKES STREET
- EXISTING BLDG TO REMAIN
- EXISTING BLDG TO REMAIN
- DISTRICT OFFICE
- HIGH SCHOOL ADDITION
- NEW AUX GYM
- LOCKER ROOMS: ALTERNATE
- LOCKER ROOMS: BASE BID
- NEW BUS LOADING AREA
- WRESTLING
- REST-ROOMS
- VEHICLE ROUTES BETWEEN EAST AND WEST PARKING LOTS
- POSSIBLE NEW VEHICLE ACCESS ALTERNATE
- 15

- [illegible]

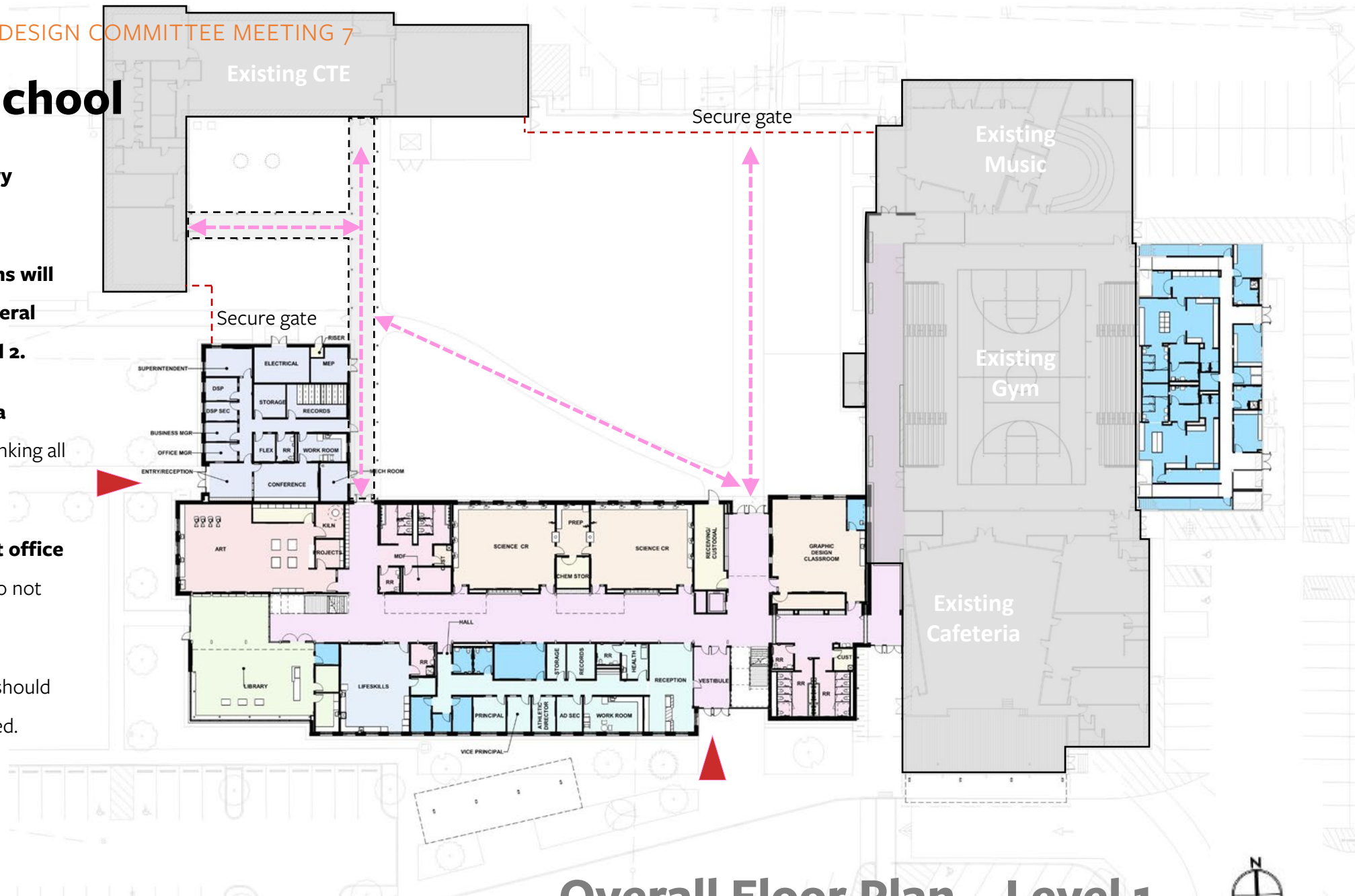




# Floor Plans: Update

# Banks High School

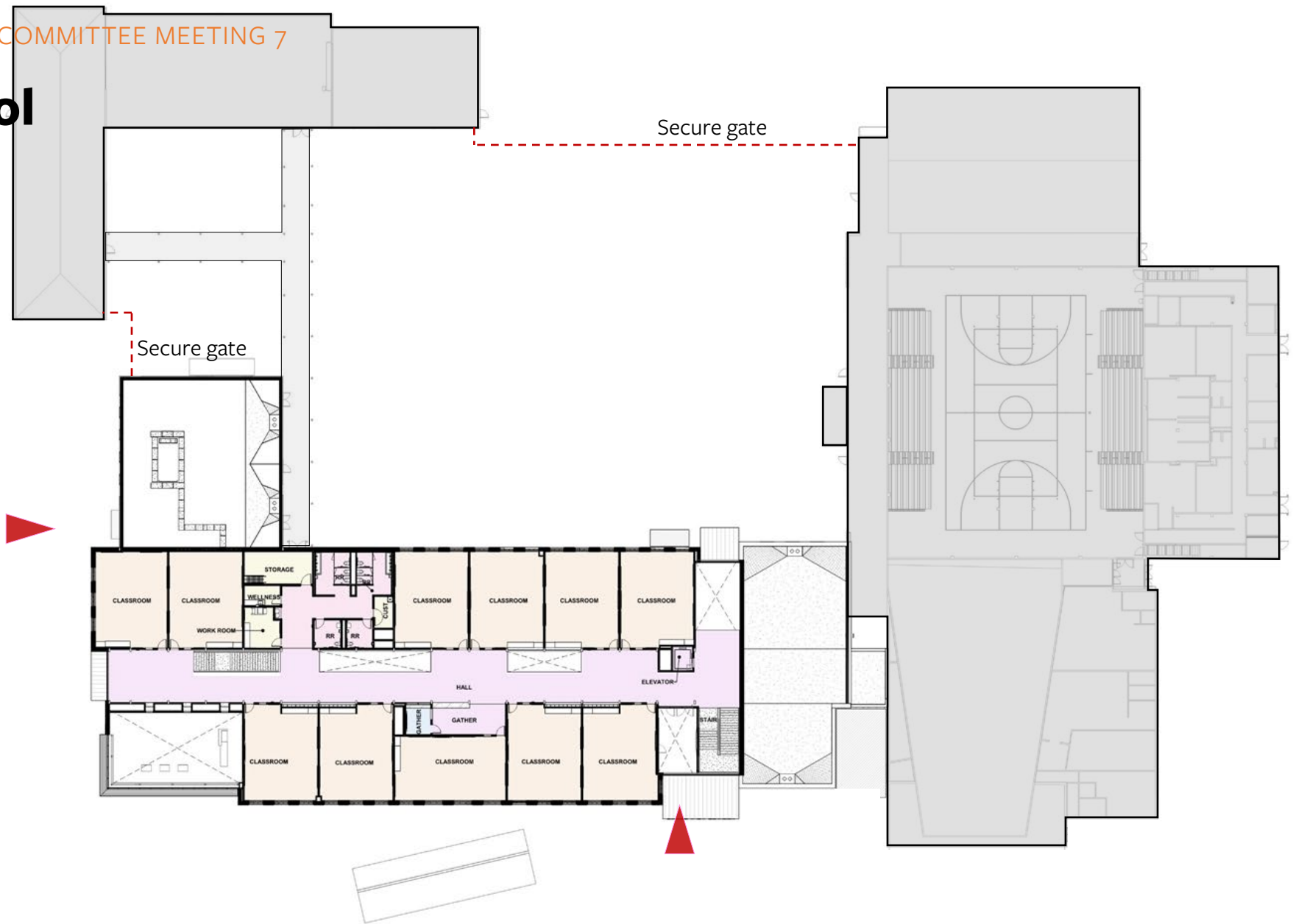
- A new **prominent main entry Library**.
- **Elective / special classrooms will be on Level 1** and all the **general classrooms will be on Level 2**.
- Large **main hallway will be a shared community space** linking all parts of the school.
- **Separate entry into district office** so visitors to District Office do not enter main HS area.
- **Exterior gathering spaces** should be simple and easily maintained.





# Banks High School

- A new **prominent main entry** **Library**.
- **Elective / special classrooms will be on Level 1** and all the **general classrooms will be on Level 2**.
- Large **main hallway will be a shared community space** linking all parts of the school.
- **Separate entry into district office** so visitors to District Office do not enter main HS area.
- **Exterior gathering spaces** should be simple and easily maintained.





# HS Building: Exteriors



# View of Classroom Wing and New Main Entry





# View towards Library





# View towards District Office Entry







# HS Building: Interiors

# Interiors Review – Main Entry





# Interiors Review – General Classroom





# Interiors Review – General Science





# Interiors Review – Library





# Interiors Review – Level 1 Hallway





# Interiors Review – Level 2 Hallway



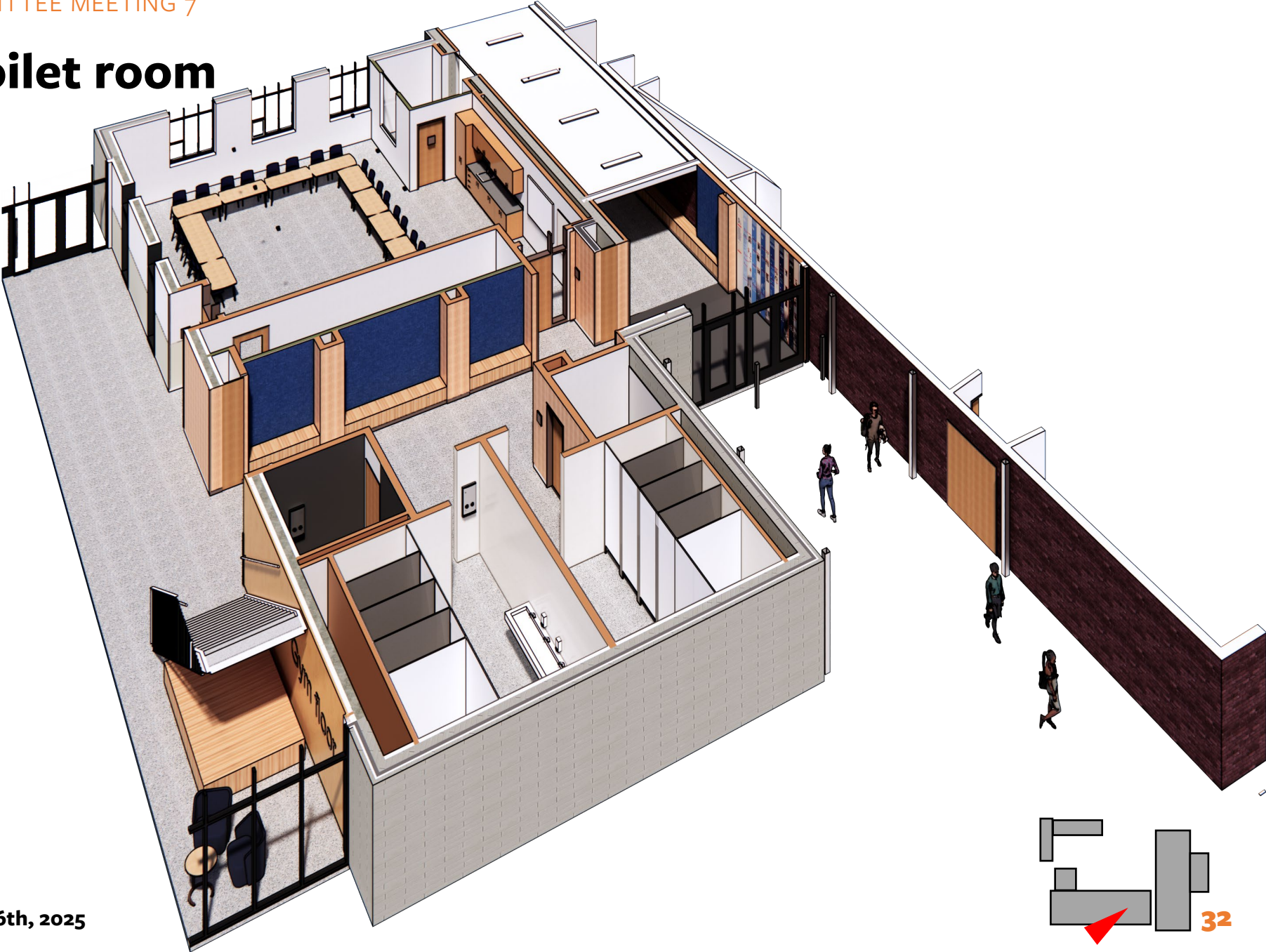


# Interiors Review – Level 1 after-hours lobby





# Interiors Review - Toilet room



# Interiors Review – District Office lobby





# HS Building: Existing hall



# Interiors Review – Level 1 Existing Hallway 01 (Wishlist)





# Interiors Review – Level 1 Existing Hallway 02 (Wishlist)





# **Tradition and Innovation Committee Salvage List**



# Tradition and Innovation Committee Salvage List

## 1. Preservation of original fixtures

- BSD shall preserve the eight surface-mounted globe lights, along with their associated patinated copper stanchions, originally located in the school board conference room of the District Office. These fixtures will be repurposed as accent and reception lighting in prominent, high-traffic areas of the new school—such as lobbies, the library, and multi-story interior spaces.

## 2. BSD shall preserve the mural located in the school board conference room of the District Office

- The mural, affixed to the wall in panels, will be carefully removed and relocated to the new library. In the event that any damage occurs to the mural or its panels during removal or relocation, the family of the original artists will be contacted to assist with its repair or restoration.

## Tradition and Innovation Committee Salvage List

### 3. BSD shall preserve the historic images and artwork currently displayed throughout the District Office and BHS

- BSD will reinstall them in common areas of the new high school. Any items found to be damaged, including previous graduating class photos that were hanging in the hallways of the 1920 building, will be scanned and incorporated into other mitigation measures. One mitigation will be the publication of a coffee table book.

### 4. A coffee table book featuring historic images of the District Office and subsequent BHS additions, yearbook photographs, artwork, curated narratives, newspaper articles, and other archival materials.

- BSD shall compile these into a bound, printed volume of artifacts. Copies will be retained in the BHS media center/library and in the administrative offices. Consulting parties and members of the public will be provided an opportunity to contribute to and comment on the development of the book.



## Tradition and Innovation Committee Salvage List

5. **Historic drawings, images, and other archival materials shall be made accessible to the community through a dedicated webpage on the BHS website.**
  - This [\*webpage will host historical information and available archival content related to BHS.\*](#) Consulting parties and members of the public will have the opportunity to contribute to and comment on the development including the submission of archival materials, stories, or ideas for content. BSD will digitally curate tangible items as they are provided by consulting parties and the public.
6. **A documentary on the history of BHS produced by BHS students.**
  - Upon completion, [\*the documentary will be embedded on the BHS website.\*](#)



# **Additional ideas discussed at committee meetings Salvage List**



# Additional ideas discussed at committee meetings Salvage List

## Gym floor

- Use for wall art & wainscot

## Gym Beams

- Countertop or seating

## Timeline/ display (wall)

- After-Hours Entry

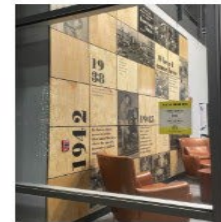
## Bricks

- Bench with a plaque

## District Office Surface mounted light fixtures (9)

- Located in Library

Tradition/ Timeline



Re-Use Gym Floor

Re-Use  
Beam/  
Column

# Additional ideas discussed at committee meetings Salvage List

## Gym floor

- Use for wall art & wainscot

## Gym Beams

- Countertop or seating

## Timeline/ display (wall)

- After-Hours Entry

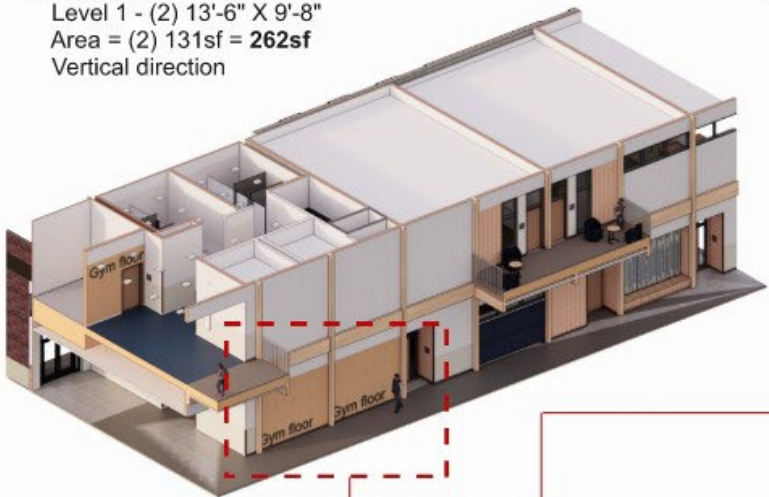
## Bricks

- Bench with a plaque

## District Office Surface mounted light fixtures (9)

- Located in Library

Reclaimed Gym floor:  
Level 1 - (2) 13'-6" X 9'-8"  
Area = (2) 131sf = 262sf  
Vertical direction



Reclaimed Gym floor:  
Level 1 & 2 Entry stair  
Area = 1300sf  
Vertical direction



Banks High School Remodel and Addition Project

Reclaimed Gym floor: **L1**

Reclaimed Gym floor:  
Level 1 - Admin logo  
Area = 127sf  
Vertical direction



# Additional ideas discussed at committee meetings Salvage List

## Gym floor

- Use for wall art & wainscot

## Gym Beams

- Countertop or seating

## Timeline/ display (wall)

- After-Hours Entry

## Bricks

- Bench with a plaque

## District Office Surface mounted light fixtures (9)

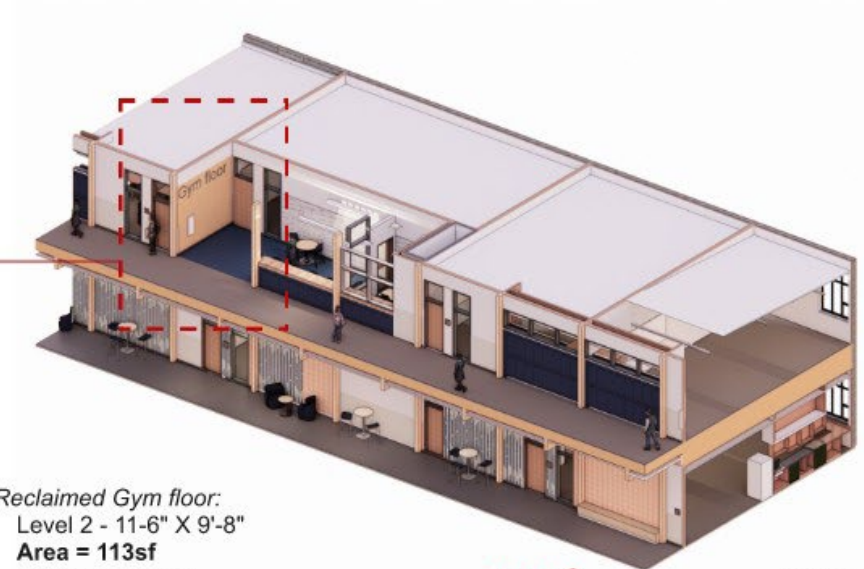
- Located in Library

Reclaimed Gym floor:  
Level 2 - 11-0" X 9'-8"  
Area = 105sf  
Vertical direction



Banks High School Remodel and Addition Project

Reclaimed Gym floor: **L2**



Reclaimed Gym floor:  
Level 2 - 11-6" X 9'-8"  
Area = 113sf  
Vertical direction

# Additional ideas discussed at committee meetings Salvage List

## Gym floor

- Use for wall art & wainscot

## Gym Beams

- Countertop or seating

## Timeline/ display (wall)

- After-Hours Entry

## Bricks

- Bench with a plaque

## District Office Surface mounted light fixtures (9)

- Located in Library

### Reclaimed Beams and columns

Level 1 - Bench  
Area = 00sf



### Reclaimed Beams and columns

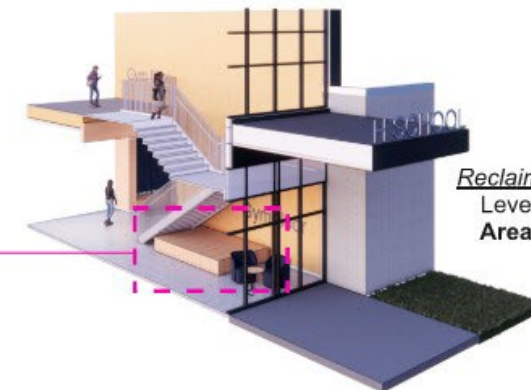
Level 1 - Seating under stair  
Area = 155sf

### Reclaimed Beams and columns

Level 1 - Bench  
(1) 13'-0" x 2'-0"  
Area = 46sf

### Reclaimed Beams and columns

Level 1 - (3) Bench seats  
(2) 7'-4" x 2'-0"  
(1) 11'-0" x 2'-0"  
Area = 110sf



### Reclaimed Beams and columns

Level 1 - Seating under stair  
Area = 155sf

Banks High School Remodel and Addition Project



# Additional ideas discussed at committee meetings Salvage List

## Gym floor

- Use for wall art & wainscot

## Gym Beams

- Countertop or seating

## Timeline/ display (wall)

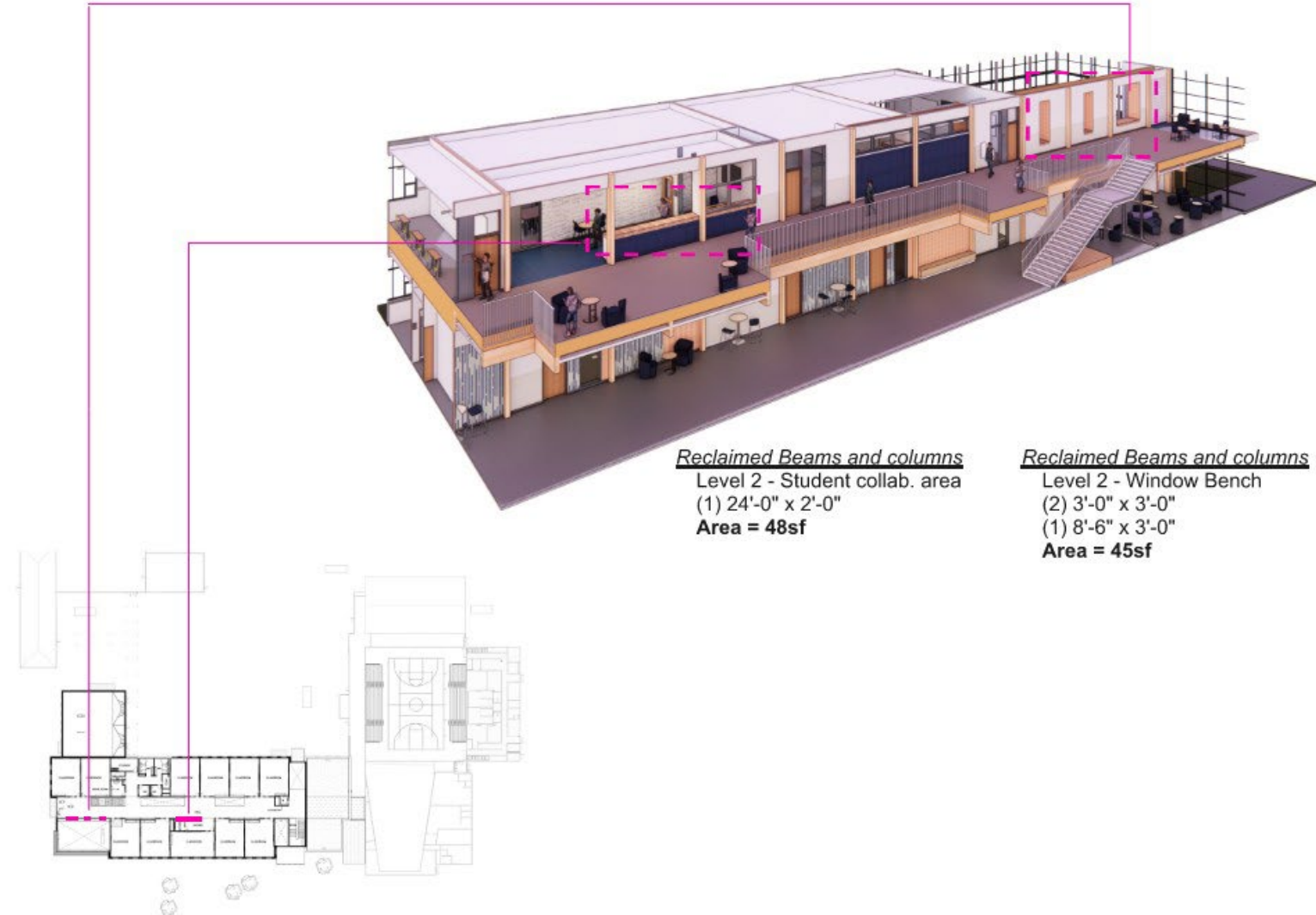
- After-Hours Entry

## Bricks

- Bench with a plaque

## District Office Surface mounted light fixtures (9)

- Located in Library



# Additional ideas discussed at committee meetings Salvage List

## Gym floor

- Use for wall art & wainscot

## Gym Beams

- Countertop or seating

## Timeline/ display (wall)

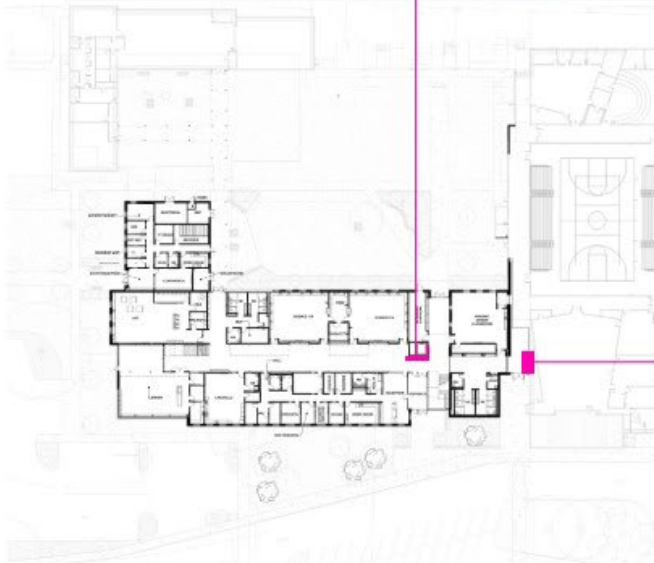
- After-Hours Entry

## Bricks

- Bench with a plaque

## District Office Surface mounted light fixtures (9)

- Located in Library





# Additional ideas discussed at committee meetings Salvage List

## Gym floor

- Use for wall art & wainscot

## Gym Beams

- Countertop or seating

## Timeline/ display (wall)

- After-Hours Entry

## Bricks

- Bench with a plaque

2

## District Office Surface mounted light fixtures (9)

- Located in Library

