



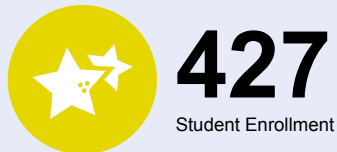
# OREGON AT-A-GLANCE SCHOOL PROFILE

## Banks Elementary School

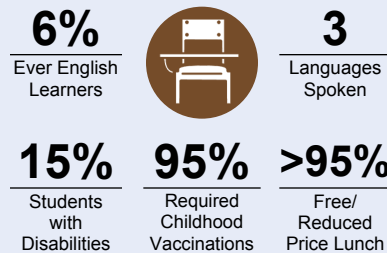
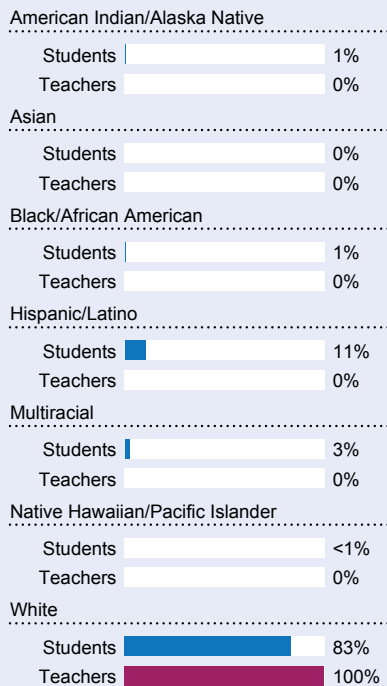
PRINCIPAL: Darla Waite-Larkin | GRADES: K-5 | 42350 NW Trellis Way, Banks 97106 | 503-324-2772



### Students We Serve



### DEMOGRAPHICS

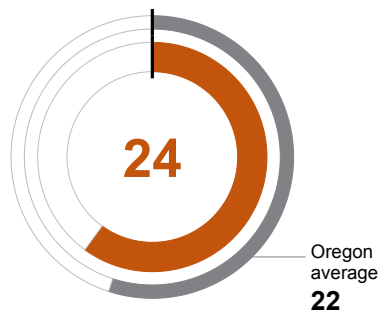


\*<10 students or data unavailable

### School Environment

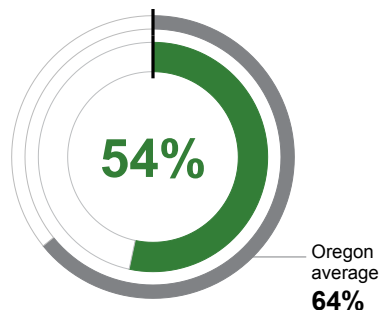
#### CLASS SIZE

Median class size.



#### REGULAR ATTENDERS

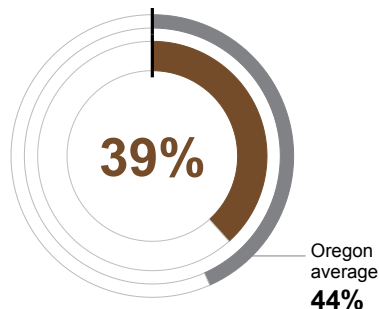
Students who attended more than 90% of their enrolled school days.



### Academic Success

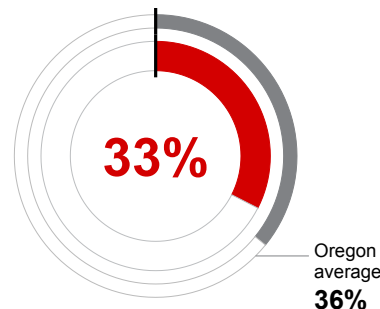
#### ENGLISH LANGUAGE ARTS

Students meeting state grade-level expectations.



#### MATHEMATICS

Students meeting state grade-level expectations.



### Academic Progress

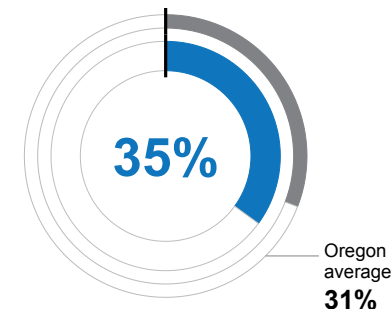
#### INDIVIDUAL STUDENT PROGRESS

Year-to-year progress in English language arts and mathematics.

Data not available in 2021-22

#### SCIENCE

Students meeting state grade-level expectations.



### School Goals

- The school's principal and staff work together to create a safe, respectful, culturally-inclusive environment with consistent school rules and expectations.
- All instructional staff in the school use sound classroom management practices that encourage student engagement and affect student learning.
- All instructional staff at the school use assessment data in planning and delivering differentiated, standards based instruction.

### State Goals

The Oregon Department of Education is partnering with school districts and local communities to ensure a 90% on-time, four year graduation rate by 2025. To progress toward this goal, the state will prioritize efforts to improve attendance, provide a well-rounded education, invest in implementing culturally responsive practices, and promote continuous improvement to close opportunity and achievement gaps for historically and currently underserved students.

### Safe & Welcoming Environment

Visitors and volunteers are welcome at Banks Elementary and are encouraged to come and support the school. Volunteer background reference checks are done every year for any person over 18 who volunteers under the supervision of a licensed staff member. Lunchtime is a popular time for parents to visit their children mid-day and check on progress as well as be a part of the school community. However, at this time, visitors and volunteers must show proof of Covid-19 vaccination in order to volunteer or join their child for lunch.



# OREGON AT-A-GLANCE SCHOOL PROFILE CONTINUED

## Banks Elementary School

2021-22

### Outcomes

#### Our Staff (rounded FTE)



**23**

Teachers



**8**

Educational assistants



**0**

Counselors/  
Psychologists



**95%**

Average teacher retention rate



**78%**

% of licensed teachers with more than 3 years of experience



**Yes**

Same principal in the last 3 years

#### REGULAR ATTENDERS

American Indian/Alaska Native	<10 students or data unavailable
Asian	<10 students or data unavailable
Black/African American	<10 students or data unavailable
Hispanic/Latino	54%
Multiracial	31%
Native Hawaiian/Pacific Islander	<10 students or data unavailable
White	54%
Free/Reduced Price Lunch	54%
Ever English Learner	60%
Students with Disabilities	41%
Migrant	<10 students or data unavailable
Homeless	<10 students or data unavailable
Students in Foster Care	<10 students or data unavailable
Talented and Gifted	54%
Female	50%
Male	57%
Non-Binary	<10 students or data unavailable

#### ENGLISH LANGUAGE ARTS

<10 students or data unavailable
<10 students or data unavailable
<10 students or data unavailable
37%
<10 students or data unavailable
<10 students or data unavailable
40%
39%
<10 students or data unavailable
<5%
<10 students or data unavailable
<10 students or data unavailable
<10 students or data unavailable
80%
44%
34%
<10 students or data unavailable

#### MATHEMATICS

<10 students or data unavailable
<10 students or data unavailable
<10 students or data unavailable
32%
<10 students or data unavailable
<10 students or data unavailable
33%
33%
<10 students or data unavailable
<5%
<10 students or data unavailable
<10 students or data unavailable
<10 students or data unavailable
90%
32%
34%
<10 students or data unavailable

#### About Our School

##### BULLYING, HARASSMENT, AND SAFETY POLICIES

Banks Elementary follows all policies and procedures to protect students and staff from unsafe situations and conditions. BES utilizes the Character Strong curriculum in addition to the Second Steps curriculum and Bullying Prevention curriculum that coincides with Second Steps. BES is also a Positive Behavior and Interventions School. As a district we are also members of the SafeOregon.com safety threat reporting network.

##### EXTRACURRICULAR ACTIVITIES

Banks Elementary is the hub of the community. In an effort to provide positive experiences for students after school, we anticipate starting more after school clubs that have been discontinued for the past two years due to Covid-19. Banks Youth Sports is still active and a large part of our community.

- Banks Youth Sports

##### PARENT ENGAGEMENT

Volunteer opportunities have been limited over the past two years due to Covid-19. At this time, we are allowing volunteers who are vaccinated to come and help in our school and classrooms. We have many parents who spend hours at the school, providing much appreciated support to students and staff. Parents are encouraged to attend student-teacher conferences as well as assemblies and performances at the school, which we will start having again this school year.

##### COMMUNITY ENGAGEMENT

Banks Elementary has a strong Parent-Teacher Organization that encourages participation in family events and fundraising opportunities. In the past, the PTO has sponsored an Open House at the start of the school year, concerts during the school year and a STEAM night in May. These events are always very well attended and we look forward to offering these opportunities to our students and families again this year. The school has also partnered with an after school daycare group for families needing additional supervision coverage for their children after school.