



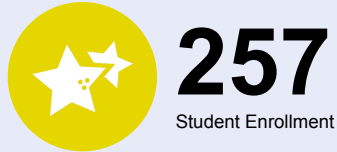
# OREGON AT-A-GLANCE SCHOOL PROFILE

## Banks Middle School

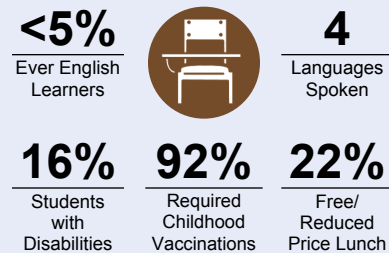
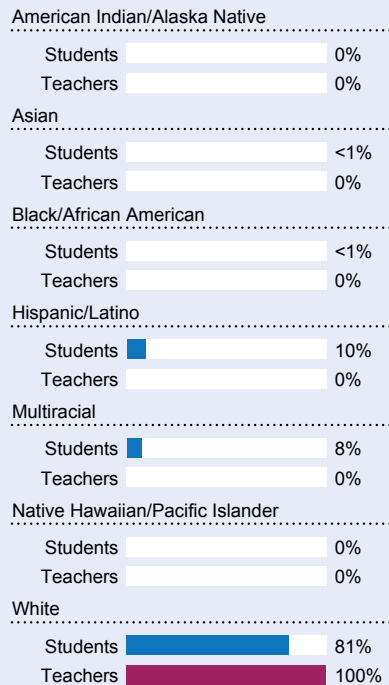


PRINCIPAL: Darla Waite-Larkin | GRADES: 6-8 | 12850 NW Main St, Banks 97106 | 503-324-3111

### Students We Serve



### DEMOGRAPHICS



\*<10 students or data unavailable

### Special Note

The At-A-Glance School and District profiles tell a story about Oregon's schools and districts. The story is harder to tell this year as the COVID-19 pandemic significantly impacted our schools and the data we collect. As a result, statewide assessment and attendance data cannot be compared to prior years and are not shown here. We have included links to our website where you can view the 2020-21 statewide assessment and attendance data and read a detailed description of how these data were impacted. We're thankful for your partnership as we focus on care, connection and the creation of safe, inclusive and supportive learning environments.

### Academic Success

#### ENGLISH LANGUAGE ARTS

Students meeting state grade-level expectations.

For 2020-21 English Language Arts data please visit:

[www.oregon.gov/ode/schools-and-districts/reportcards/reportcards/Pages/Statewide-Assessment-Results-2021.aspx](http://www.oregon.gov/ode/schools-and-districts/reportcards/reportcards/Pages/Statewide-Assessment-Results-2021.aspx)

### School Environment

#### REGULAR ATTENDERS

Students who attended more than 90% of their enrolled school days.

For 2020-21 Regular Attenders data please visit:

[www.oregon.gov/ode/schools-and-districts/reportcards/reportcards/Pages/Regular-Attenders-2021.aspx](http://www.oregon.gov/ode/schools-and-districts/reportcards/reportcards/Pages/Regular-Attenders-2021.aspx)

#### MATHEMATICS

Students meeting state grade-level expectations.

For 2020-21 Mathematics data please visit:

[www.oregon.gov/ode/schools-and-districts/reportcards/reportcards/Pages/Statewide-Assessment-Results-2021.aspx](http://www.oregon.gov/ode/schools-and-districts/reportcards/reportcards/Pages/Statewide-Assessment-Results-2021.aspx)

### Academic Progress

#### INDIVIDUAL STUDENT PROGRESS

Year-to-year progress in English language arts and mathematics.

Data not available in 2020-21

#### SCIENCE

Students meeting state grade-level expectations.

For 2020-21 Science data please visit:

[www.oregon.gov/ode/schools-and-districts/reportcards/reportcards/Pages/Statewide-Assessment-Results-2021.aspx](http://www.oregon.gov/ode/schools-and-districts/reportcards/reportcards/Pages/Statewide-Assessment-Results-2021.aspx)

### School Goals

1. We work together to create a safe, respectful environment.
2. We identify students who need additional learning time and provide support.
3. We use classroom management practices that encourage engagement and learning.
4. We pursue two-way communication among stakeholders.
5. We align instruction and assessments to state standards.
6. We use a distributed leadership process to build capacity of others in the school.
7. We recruit and retain highly qualified staff.

### State Goals

The Oregon Department of Education is partnering with school districts and local communities to ensure a 90% on-time, four year graduation rate by 2025. To progress toward this goal, the state will prioritize efforts to improve attendance, provide a well-rounded education, invest in implementing culturally responsive practices, and promote continuous improvement to close opportunity and achievement gaps for historically and currently underserved students.

### Safe & Welcoming Environment

At BMS we work hard to make sure students and parents feel safe and valued. We begin introducing students to BMS with a visit to our campus while they are still in 5th grade and an orientation night for parents of incoming 6th graders in August. Our small size allows every staff member the opportunity to get to know each student personally, which translates into individualized support for each student and a sense of connection throughout the school community.



### Outcomes

#### Our Staff (rounded FTE)



**12**

Teachers



**2**

Educational assistants



**0**

Counselors/  
Psychologists



**90%**

Average teacher retention rate



**92%**

% of licensed teachers with more than 3 years of experience



**No**

Same principal in the last 3 years

	REGULAR ATTENDERS	ENGLISH LANGUAGE ARTS	MATHEMATICS
American Indian/Alaska Native			
Asian			
Black/African American			
Hispanic/Latino			
Multiracial			
Native Hawaiian/Pacific Islander			
White			
Free/Reduced Price Lunch			
Ever English Learner			
Students with Disabilities			
Migrant			
Homeless			
Talented and Gifted			
Female			
Male			
Non-Binary			

### About Our School

#### BULLYING, HARASSMENT, AND SAFETY POLICIES

Banks Middle School is a Positive Behavior and Interventions and Supports (PBIS) School, and our staff PBIS team leads our work in "creating a culture of kindness." We have a Student Support Team which looks at safety concerns for individual students and we follow all district policies and procedures to protect students and staff from unsafe situations and conditions. As a district we are also members of the SafeOregon.com safety threat reporting network.

#### EXTRACURRICULAR ACTIVITIES

At BMS, we support the following activities to enrich our students' academic, physical, and social well-being: Robotics club, Banks Youth Sports, and Dance Team. Other short term activities may arise throughout the year such as afterschool Art classes or afterschool STEAM/STEAM activities

#### PARENT ENGAGEMENT

We have a fantastic Parent Teacher Organization at BMS which hosts our school dances, 8th grade promotion, and our annual Santa's Breakfast fundraiser. The PTO also provides the volunteer support that make possible our annual events like Registration Night, the Jog-A-Thon, and Field Day. Additionally, all parents are encouraged to attend student-teacher conferences, assemblies, and music performances.

#### COMMUNITY ENGAGEMENT

BMS has a strong fine arts program which puts on multiple performances throughout the year including band and choir concerts, a drama production, and a talent show; we have a science fair in February which is open to the community and includes presentations from every BMS student as well as exhibits from Oregon Museum of Science and Industry, the Rice Northwest Museum of Rocks and Minerals, and the Banks High School Robotics Team; our 6th grade hosts a well-attended annual World Expo with presentations on countries from every continent; and, as the newest facility in the district, BMS regularly provides the space for community sporting events, gatherings, and fundraisers.