



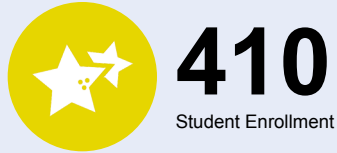
OREGON AT-A-GLANCE SCHOOL PROFILE

Banks Elementary School

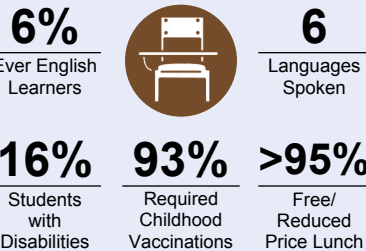
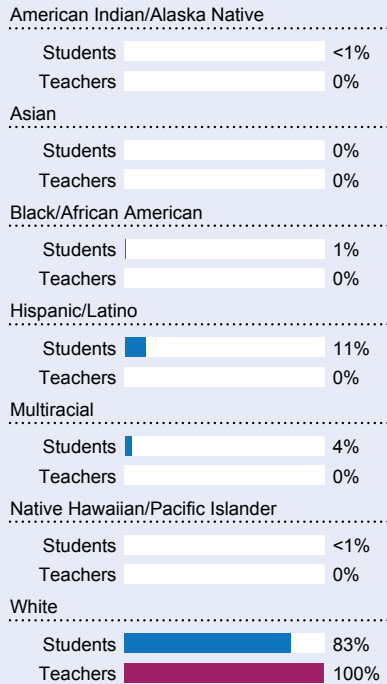
2020-21

PRINCIPAL: Darla Waite-Larkin | GRADES: K-5 | 42350 NW Trellis Way, Banks 97106 | 503-324-2772

Students We Serve



DEMOGRAPHICS



*<10 students or data unavailable

Special Note

The At-A-Glance School and District profiles tell a story about Oregon's schools and districts. The story is harder to tell this year as the COVID-19 pandemic significantly impacted our schools and the data we collect. As a result, statewide assessment and attendance data cannot be compared to prior years and are not shown here. We have included links to our website where you can view the 2020-21 statewide assessment and attendance data and read a detailed description of how these data were impacted. We're thankful for your partnership as we focus on care, connection and the creation of safe, inclusive and supportive learning environments.

Academic Success

ENGLISH LANGUAGE ARTS

Students meeting state grade-level expectations.

For 2020-21 English Language Arts data please visit:

www.oregon.gov/ode/schools-and-districts/reportcards/reportcards/Pages/Statewide-Assessment-Results-2021.aspx

School Environment

REGULAR ATTENDERS

Students who attended more than 90% of their enrolled school days.

For 2020-21 Regular Attenders data please visit:

www.oregon.gov/ode/schools-and-districts/reportcards/reportcards/Pages/Regular-Attenders-2021.aspx

MATHEMATICS

Students meeting state grade-level expectations.

For 2020-21 Mathematics data please visit:

www.oregon.gov/ode/schools-and-districts/reportcards/reportcards/Pages/Statewide-Assessment-Results-2021.aspx

Academic Progress

INDIVIDUAL STUDENT PROGRESS

Year-to-year progress in English language arts and mathematics.

Data not available in 2020-21

SCIENCE

Students meeting state grade-level expectations.

For 2020-21 Science data please visit:

www.oregon.gov/ode/schools-and-districts/reportcards/reportcards/Pages/Statewide-Assessment-Results-2021.aspx

School Goals

1. The school's principal and staff work together to create a safe, respectful, culturally-inclusive environment with consistent school rules and expectations.
2. All instructional staff in the school use sound classroom management practices that encourage student engagement and affect student learning.
3. All instructional staff at the school use assessment data in planning and delivering differentiated, standards-based instruction.

State Goals

The Oregon Department of Education is partnering with school districts and local communities to ensure a 90% on-time, four year graduation rate by 2025. To progress toward this goal, the state will prioritize efforts to improve attendance, provide a well-rounded education, invest in implementing culturally responsive practices, and promote continuous improvement to close opportunity and achievement gaps for historically and currently underserved students.

Safe & Welcoming Environment

Visitors and volunteers are welcome at Banks Elementary and are encouraged to come and support the school. This year, however, we are following Covid-19 protocols and only allowing volunteers who are fully vaccinated and are not allowing visitors during this time. Volunteer background reference checks are done every year for any person over 18 who volunteers under the supervision of a licensed staff member. Lunch time is a popular time, in a regular year without Covid, for parents to visit their children mid-day and check on progress as well as be a part of the school community.



Outcomes

Our Staff (rounded FTE)



22

Teachers



7

Educational assistants



0

Counselors/
Psychologists



92%

Average teacher retention rate



83%

% of licensed teachers with more than 3 years of experience



No

Same principal in the last 3 years

	REGULAR ATTENDERS	ENGLISH LANGUAGE ARTS	MATHEMATICS
American Indian/Alaska Native			
Asian			
Black/African American			
Hispanic/Latino			
Multiracial			
Native Hawaiian/Pacific Islander			
White			
Free/Reduced Price Lunch			
Ever English Learner			
Students with Disabilities			
Migrant			
Homeless			
Talented and Gifted			
Female			
Male			
Non-Binary			

About Our School

BULLYING, HARASSMENT, AND SAFETY POLICIES

Banks Elementary follows all policies and procedures to protect students and staff from unsafe situations and conditions. BES utilizes the Second Steps and Character Strong curriculum and is a Positive Behavior and Interventions School (PBIS). As a district we are also members of the SafeOregon.com safety threat reporting network.

EXTRACURRICULAR ACTIVITIES

Banks Elementary is the hub of the community. In an effort to provide positive experiences for students after school, we typically have many clubs and sports opportunities throughout the year. This year, with Covid-19, we have to limit these after school activities but in the past we have had:
Mad Science
Code to the Future
Bricks4Kidz
Art Club
Banks Youth Sports

PARENT ENGAGEMENT

Volunteer opportunities are in abundance during a regular school year and a large percentage of our parents spend many hours at the school, providing much appreciated support to students and staff. Parents are encouraged to attend student-teacher conferences as well as assemblies and performances at the school. We also have curriculum nights and science/art fairs that bring many families into the school.

COMMUNITY ENGAGEMENT

Banks Elementary has a strong Parent-Teacher Organization that encourages participation in family events and fundraising opportunities. The school sponsors and Open House at the start of the school year, concerts during the school year and a STEAM night in May. These events are always very well attended. The school has also partnered with an after school daycare group for families needing additional supervision coverage for their child after school.